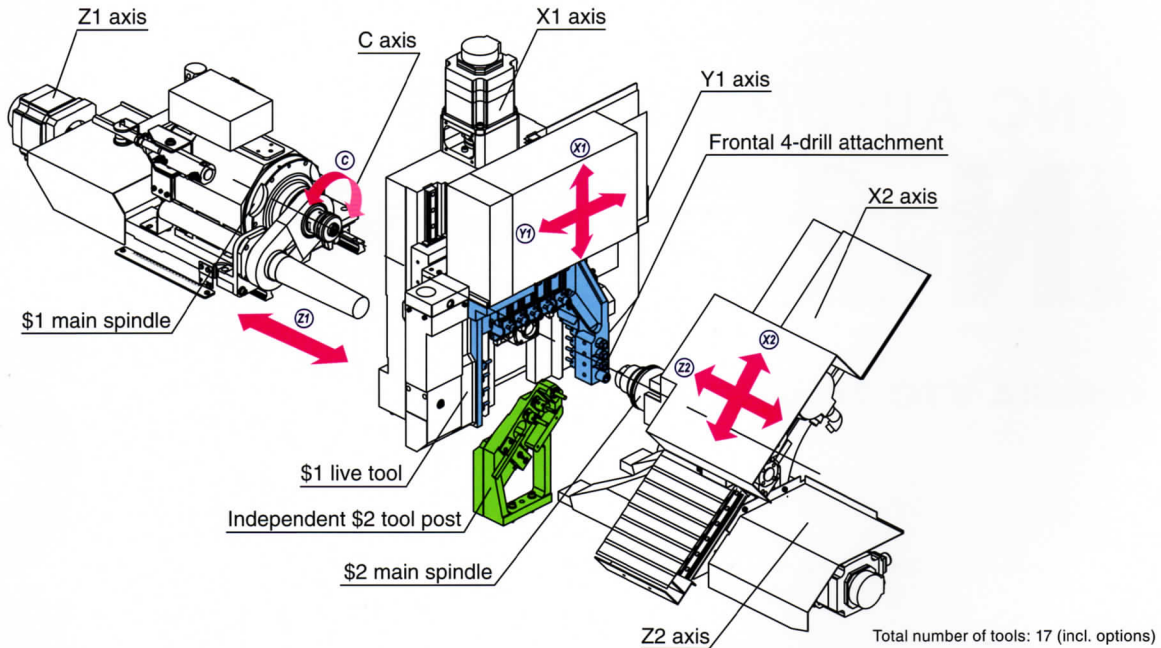
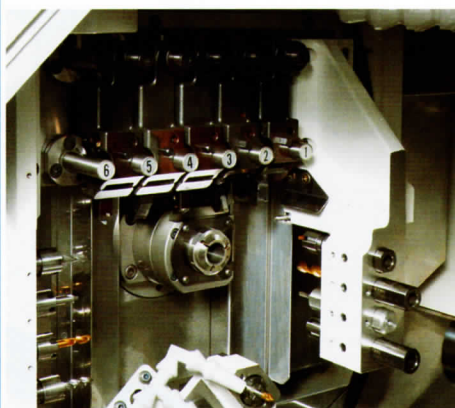


Advanced new model of “UB” series, a great

- Rapid feed rate speed of 36m/min.
- Adopts new tool holder (□ 12.7mm)
- Built-in motor (3.7kW) with overwhelming torque on Main Spindle enables to cut harder material
- C-axis function for \$1 & \$2 as standard function



Tool Post (\$1)

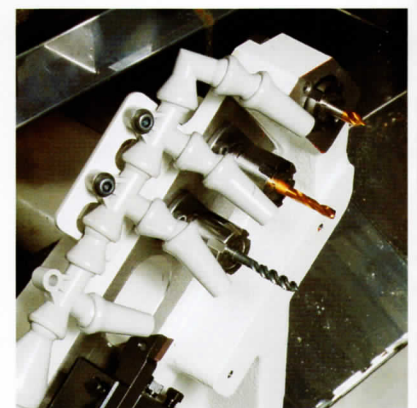


Tool	Size	Standard	Options
OD Tool (Tool Holder)	□ 12.7	5	6
ID Tool	ER-16	4	4
Live Tool	ER-16	4	3

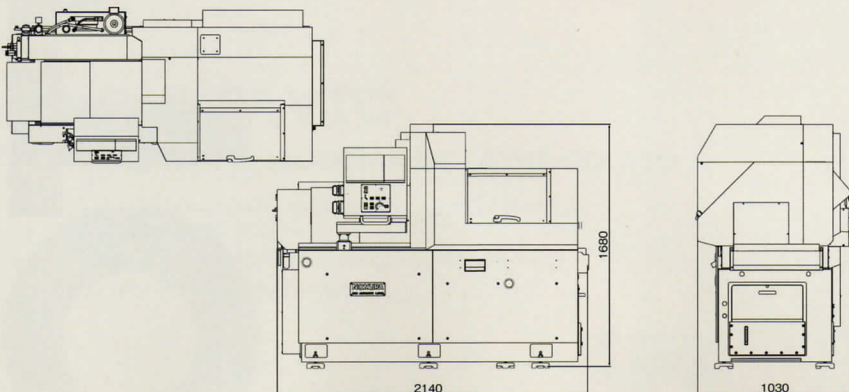
Tool Post (\$1)

Succeed the tool-preset method enabling quick changing of tooling.
The tool holder has few twine-trouble of cut-powder with small-sized, highly hard and new design.

Tool Post (\$2)



Floor Plan



Safety System (Standard Equipment)



Coolant oil cut-off detector

Stops the machine automatically when the pressure of coolant oil decreases below specified level.



Door safety interlock switch

Causes the main power breaker to trip and the power to shut down when electric cabinet cover is opened.



Lightning surge protection function

Protects electronic circuit from high voltage surge noise such as lightning.



Auto power interception

Switches off the power breaker on the machine automatically when the machine is stopped during the automatic operation for any reason.

r solid and stable performance.



(Photo: NN-20UB8 Option specification)

Position tool

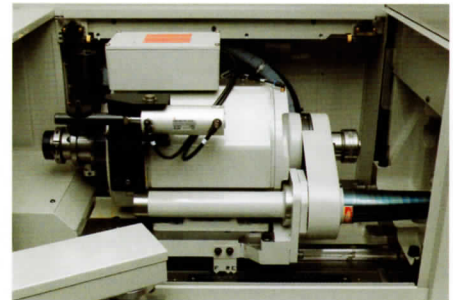
- Center drill
- Milling
- Tap
- OD tool

Post (\$2)

Post (\$2) controllable independently enables a wide range of optional installations.



NC control model has adopted MITSUBISHI M70A, whose 8.4" Type and TFT liquid crystal improve the sight performance. C-axis control function is built-in as standard, which shortens the working time because of no returning to the basic happened when to change from the main spindle to C-axis, by the basic position-loop control of main spindle.



3.7kW oil coolant built-in motor is adopted on Main spindle, and C-axis function is carried on Back main spindle. (Simple belt C-axis)



Main spindle load detection mode

Stops the machine detecting defects in the main spindle when standard load and actual main spindle load are different.



Cut-off tool breakage detector

Stops the machine automatically detecting materials that cannot be completely cut-off due to the breakage failure of the parting tool.



Tap breakage detector (Option)

Stops the machine automatically detecting broken tap while processing the edge face of the tap.

Option

Automatic fire extinguisher

Automatically put out the fire and breaks the power source when fire happens.

Signal warning light, 3-stage type

Facilitate confirmation in the distance on how the machine is working.



Specification Item		Specification Value	Standard Accessories
Max. Machining Capabilities	Machining diameter	φ20mm (0.79")	Fixed guide bush 20
	Machining length	200mm (0.79")/1 chuck	4 Live tool unit
	Max. Parts unloading length	105mm (4.13")	Frontal 4-drill attachment
	Main spindle through-hole diameter	φ24mm (0.79")	Tool holder □ 12.7 (4 pcs.)
Main spindle	Main spindle RPM (\$1 · \$2)	10000 r.p.m. max. /6000 r.p.m. max.	Tool holder □ 12.7 for cut-off (1 pce.)
	Max. Back spindle chuck diameter	φ20mm (0.79")	Chuck sleeve · Spring · Spindle cap (\$1) P-20
	Max. no. of tools	17	Chuck sleeve · Spring · Spindle cap (\$2) P-20
\$1	OD tool □ 12.7 x 150mm	5	Drill holder φ22-10-70
	Frontal hole ER16	4	Tap holder φ22-94L
	Live tool ER16	4	Main spindle cooling unit
	Max. frontal drill diameter	φ10mm (0.39")	Main spindle air-purge
	Max. frontal drill length	40mm (1.57")	Automatic lubricator (w/level detection)
	Max. frontal tap diameter	M8	Coolant oil cut-off detector (\$1, \$2)
	Max. live tool spindle drill diameter	φ8mm (0.31")	Cut-off tool breakage detector
	Max. live tool spindle tap diameter	M6	Door safety interlock
	Live main tool spindle	6000 r.p.m.max.	Lightning surge protection function
	OD tool □ 10 x 80mm	1	Main spindle load detection mode
\$2	Frontal drill ER16	3	Automatic power interception
	Frontal max. drill diameter	φ8mm	Working light (High luminous LED)
	Frontal max. tap-hole	M6	Parts catcher (\$2)
	Rapid feed speed rate	36m/min.	Leveling pads
Motor	Min. command unit	0.0001mm	Parts box
	Main spindle C-axis min. command unit (\$1, \$2)	0.0001°	
	Main spindle motor	2.2/3.7kW	
	Live tool motor	0.75kW	
	Back main spindle motor	0.75kW	
	X1, Z1	1.0kW	
	Y1, X2, Z2	0.5kW	
	Coolant pump	0.25kW	
Dimensions and Others	Lubricant pump	0.003kW	
	Main spindle center height	1000mm (39.37")	
	Pneumatic pressure & flow rate	0.6MPa, 50L/min.	
	Coolant tank	110L	
	Lubricant tank	0.8L	
	W + D + H	2140 x 1030 x 1680mm (84.25"x40.55"x66.14")	
	Weight (incl. options)	2050kg (4515lbs)	
	NC	MITSUBISHI M70A	
NC standard function	NC display	8.4" color TFT LCD	
	Machining program memory capacity	600m	
	No. of Tool off-center correction	40 sets	
	Background programming editing function		
	Main spindle C-axis function (\$1, \$2)		
	User Macro function		
	Tool nose wear compensation		
	Corner chamfering/Corner rounding		
	Fixed cycle		
	Complex fixed cycle		
	Geometric commands		
	Operation manual		
	Serial In/Output interface		
CF card interface			

Optional Accessories	
\$1	Synchronous rotary guide bush 20
	Synchronous rotary guide bush drive unit
	Tool holder □ 12.7 (additional)
\$2	Tool holder □ 12.7 for cut-off (additional)
	Drill holder for deep hole
	Tap holder for deep hole
	Back tool holder R
	Back tool holder L
REGO-FIX ERM nut	
Tool presetter	
Manual pulse generator 37P	
NC display language (English/Chinese/Korean)	
Parts catcher (\$1)	
Warning light	
Override switch	
Automatic fire extinguisher	
Tooling	
Working tool set	
Parts conveyor	
Machine hanger bolt	

The above-mentioned machine capability is for the case when work material is SUS303.

Depending on the processing condition such as the quality of work material and the tools to be used, machine capabilities values may differ from the above-mentioned values.

Note: The specification is based on the specifications applied within Japan. Specifications are subject to change without notice.

Note: This product could be classified as strategic item or other export regulated under the Foreign Exchange and Foreign Trade Law.
Contact our sales representative when exporting this product.

NOMURA VTC

NOMURA VTC AUTOMATIC LATHE CO.,LTD

437, TANAZAWA OKUTAMA-MACHI, NISHITAMA-GUN
TOKYO 198-0106 JAPAN

PHONE : +81-428-85-1410 FAX : +81-428-85-1418

URL: <http://www.nomuravtc.co.jp>

