

QUASER

we cut faster

MD 1200 SERIES

QUASER
 we cut
MD12
 P



SAFETY INSTRUCTIONS

READ AND UNDERSTAND "DANGER" SIGNATURE BEFORE USE OF MACHINE FOR THE FIRST TIME. BEFORE REPAIRS, MAINTENANCE OR WHEN CLEANING THE MACHINE, DISCONNECT THE POWER SUPPLY AND LOCK IT TO PREVENT ACCIDENTS.

1. Do not touch the rotating parts of the machine.
2. Do not touch the rotating parts of the machine when the machine is running.
3. Do not touch the rotating parts of the machine when the machine is stopped.
4. Do not touch the rotating parts of the machine when the machine is stopped.
5. Do not touch the rotating parts of the machine when the machine is stopped.
6. Do not touch the rotating parts of the machine when the machine is stopped.
7. Do not touch the rotating parts of the machine when the machine is stopped.
8. Do not touch the rotating parts of the machine when the machine is stopped.
9. Do not touch the rotating parts of the machine when the machine is stopped.
10. Do not touch the rotating parts of the machine when the machine is stopped.

⚠️ Do not touch the rotating parts of the machine when the machine is running.

⚠️ Do not touch the rotating parts of the machine when the machine is stopped.

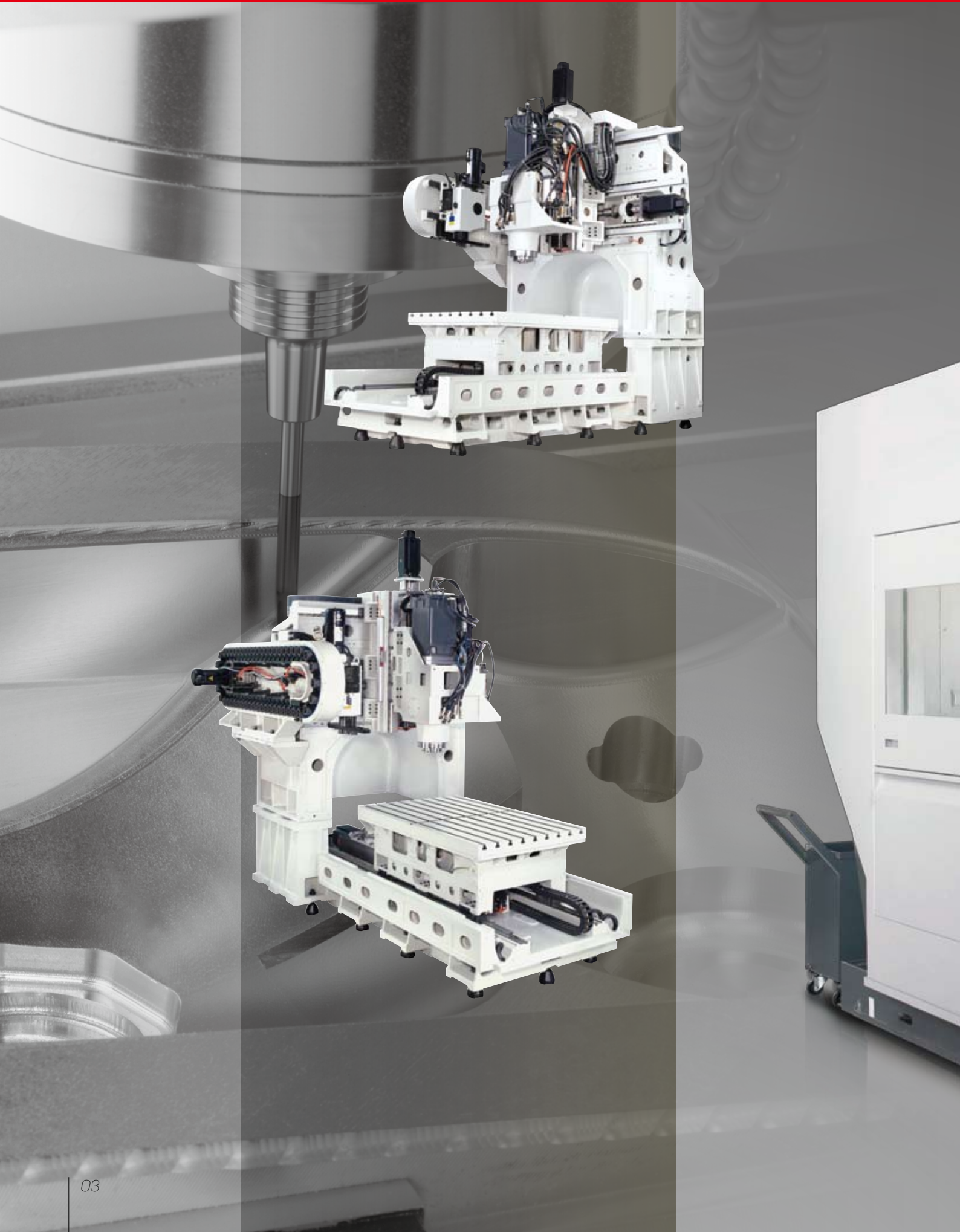
QUASER New Mould Center

SER
faster
200

mit
WEISS
SPINDEL
BIG-PLUS



Machine structure





**Bridge type structure;
enhance machine rigidity and cutting performance.**

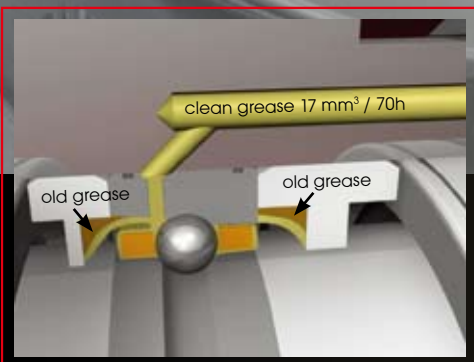
Zero overhang design, short distance between spindle head to Z axis guide way; provide high rigidity and less thermal growth in spindle head.



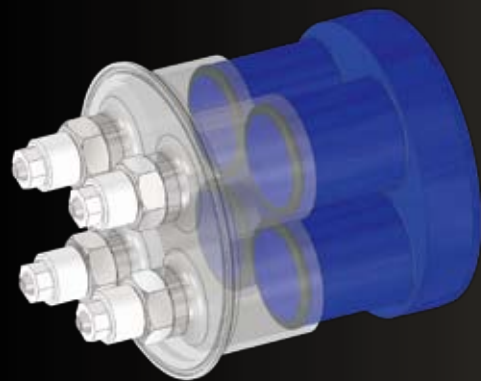
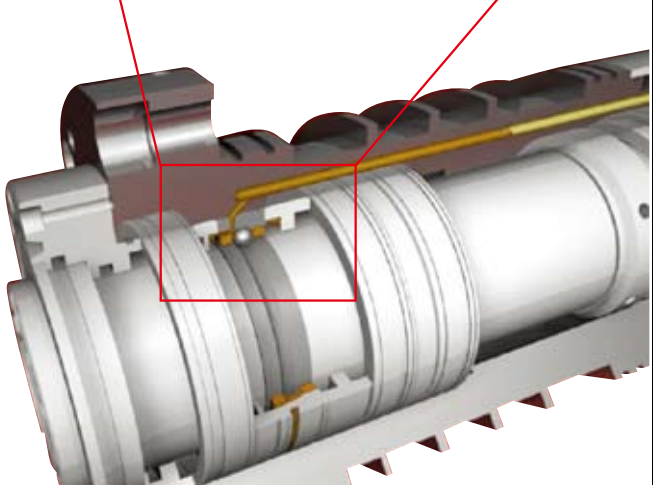
Spindle system



Use car industry re-greasing principle to supply "clean grease" at 70 hr interval by 17 mm^3 / shoot.



The grease chamber volume at 7.5 cm^3 can support 28,840 hr. This LUBCON unit service life at 3 years as minimum is guaranteed.





Coupling spindle

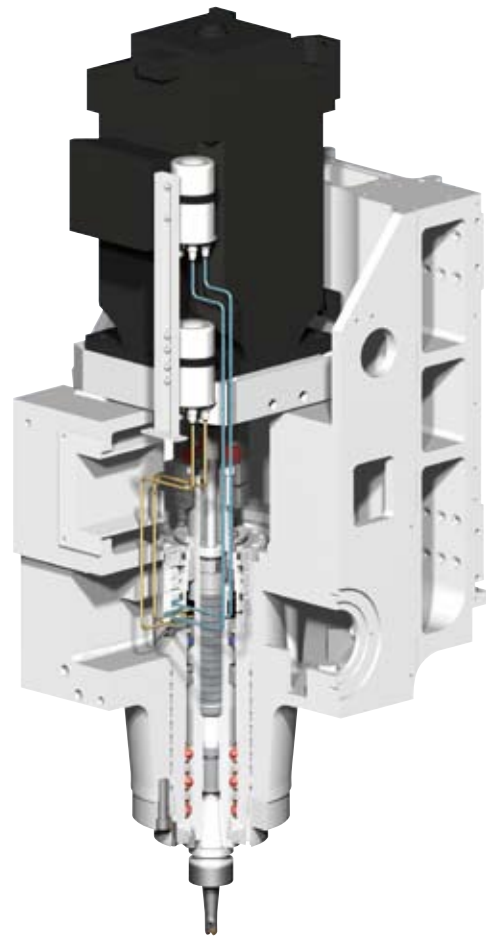
NC40R

BBT40: BT / ISO / DIN

HSK: HSK A63

15,000 min⁻¹

22KW



Motor spindle

BN15R

BBT40: BT / ISO / DIN

15,000 min⁻¹

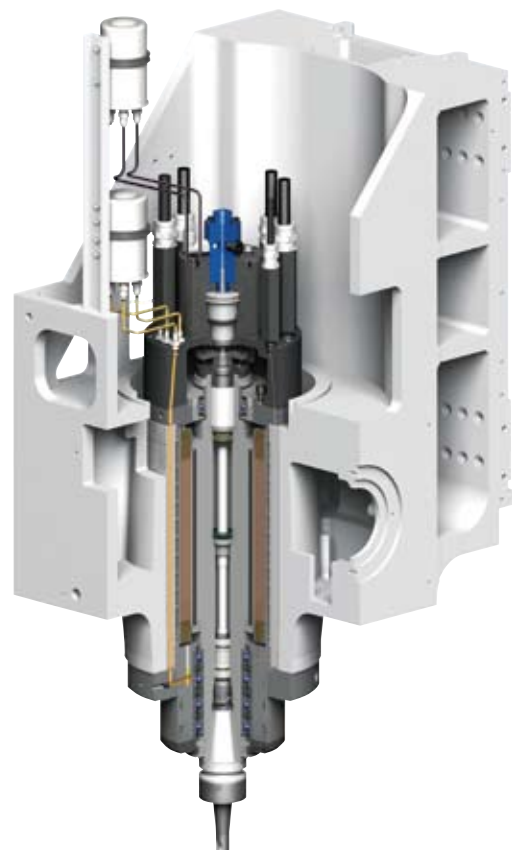
42KW

BN25R

HSK: HSK A63

25,000 min⁻¹

61KW



ATC system



Chip to chip : 8 sec.



30 ATC (STD.)



48 ATC (OPT.)





60 ATC (OPT.)



Chip management





- Nozzle coolant
- wash down coolant
- Through spindle coolant (OPT.)
- Dual augers
- Scrape or hinge type chip conveyor (OPT.)



Easy operation



- a** Top opening for easy loading / unloading.
- b** Nice & clear view from working area.
- c** Swiveling operator panel.
- d** Convenient distance for manual tool loading / unloading from spindle.

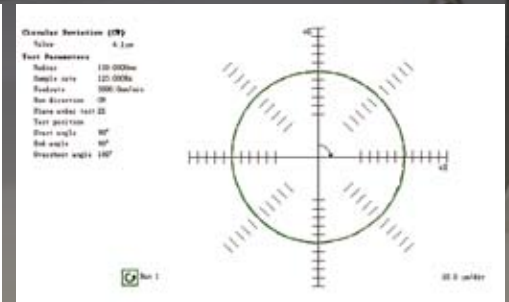
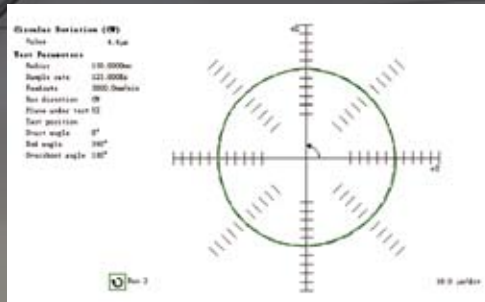
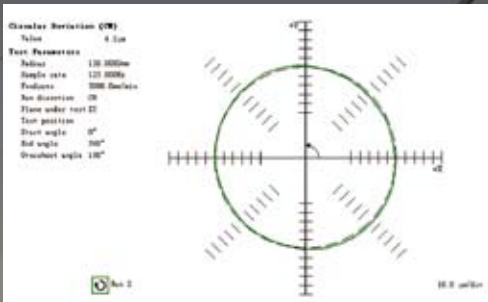
1,230 mm

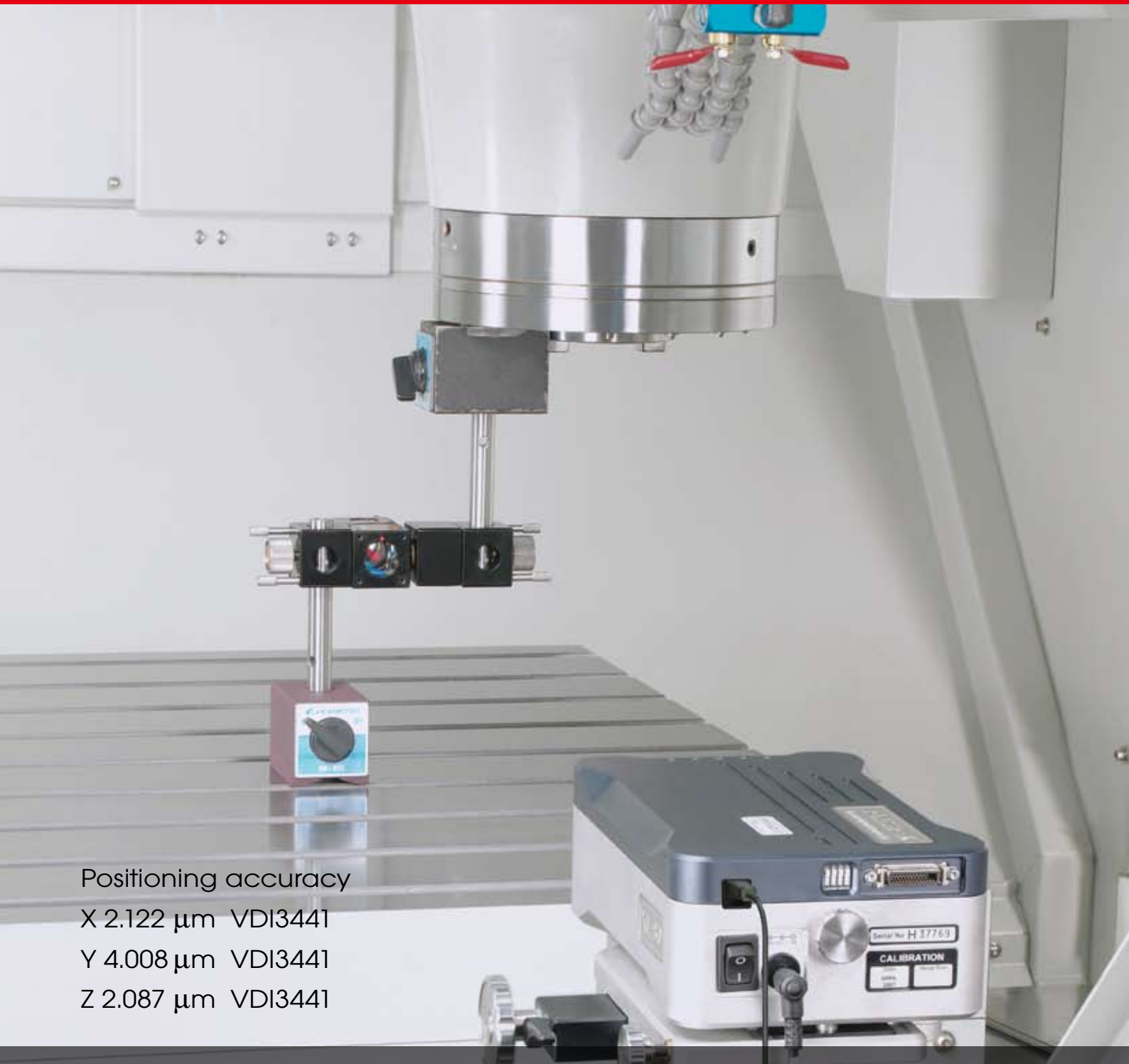


Precision accuracy



Feed rate : 5,000 m / min
 XY Value : 6.1 μ m
 YZ Value : 4.4 μ m
 ZX Value : 4.1 μ m



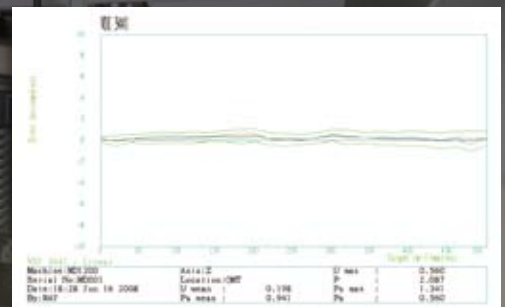
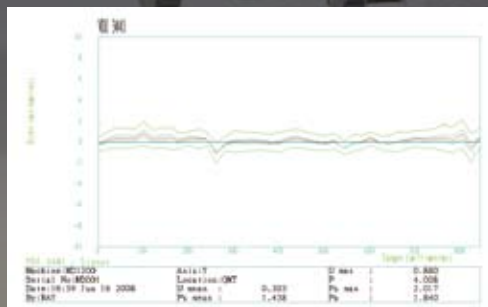
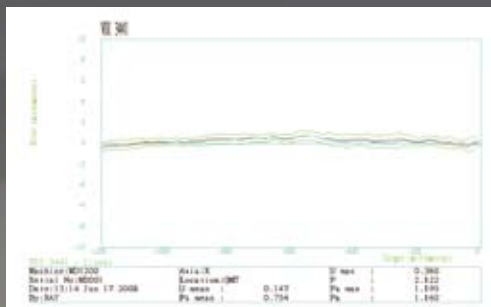


Positioning accuracy

X 2.122 μm VDI3441

Y 4.008 μm VDI3441

Z 2.087 μm VDI3441

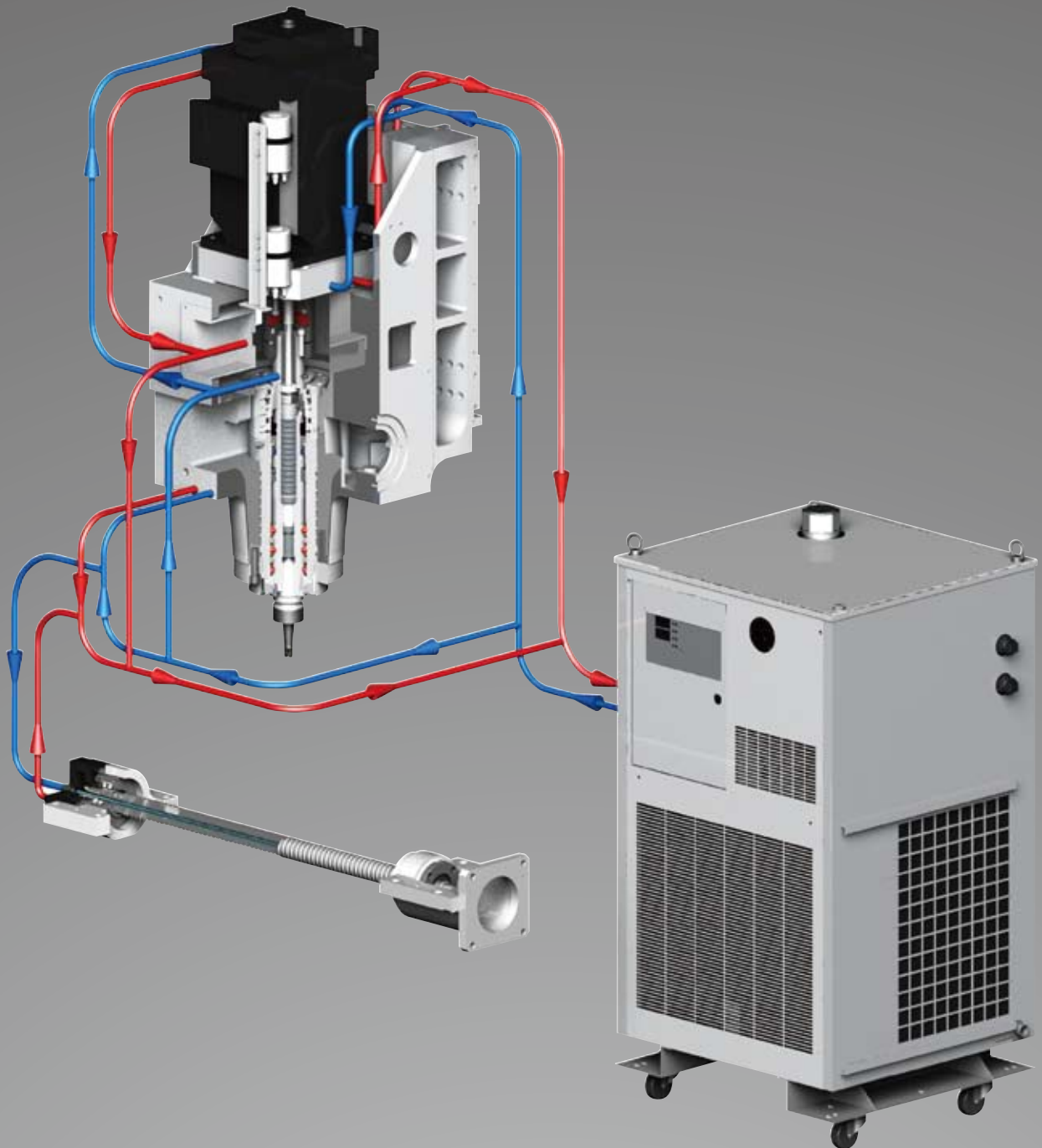


Note: The measuring results indicated in this catalog are provided as an example by random selection.

Thermal stability



- Coolant through ball screw (CTB)
- Spindle cooling circuit
- Motor cooling circuit
- Motor mounting block cooling circuit
- Large capacity oil chiller
- Scale on X, Y & Z

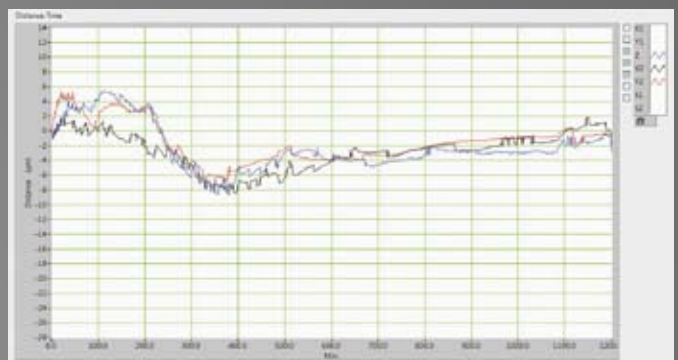
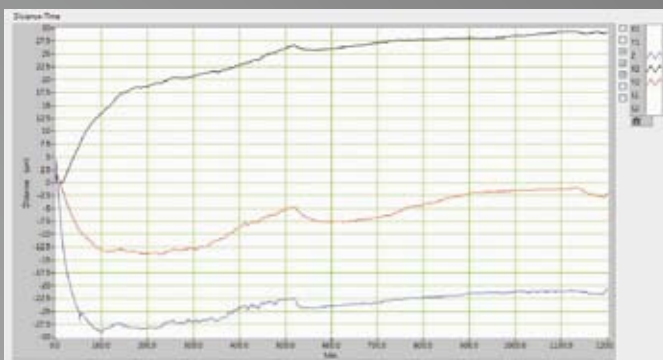




Thermal compensation on X, Y & Z

BEFORE

AFTER



Technical Data		MD1200		
		/15C	/15M	/25M
Work range				
Table size (mm)		1,400 x 900		
Travel	X (mm)	1,200		
	Y (mm)	800		
	Z (mm)	500		
Spindle nose to table surface (mm)		200 ~ 700		
Table load capacity (kg)		2,500		
Feed drive				
Feed force	X (N)	14,920 (F) / 19,800 (T)	19,800 (T)	
	Y (N)	11,519 (F) / 13,700 (T)	13,700 (T)	
	Z (N)	11,519 (F) / 13,700 (T)	13,700 (T)	
Rapid movement	X / Y / Z (m/min.)	24		
Acceleration	X / Y / Z (m/s ²)	5.5 / 5.5 / 5.5 (F)		
		5 / 5.5 / 5.5 (T)	5 / 5.5 / 5.5 (T)	
Dia. & pitch of the ball screw		Ø45 / P = 8 / 8 / 8		
Position accuracy		0.01 / 0.006		
ISO 230-2 / JIS In X / Y / Z (mm)		0.008 / 0.004 (Linear scale)		
Main spindle				
Spindle taper		BBT40 / HSK A63	BBT40	HSK A63
Max. spindle speed		15,000	15,000	25,000
Spindle base speed	F	1,400	-	-
	T	1,500	2,000	5,830
Spindle output kW (S6-40%)	F	22	-	-
	T	25	36 (42)*	51 (61)*
Spindle output torque Nm (S6-40%)	F	150	-	-
	T	159	172 (201)*	81 (97)*
Spindle transmission		Coupling	Motor spindle	
Spindle diameter (mm)		Ø70		Ø65
Tool changer				
Tool selection		Random		
Magazine positions		30 (std.) / 48 & 60 (opt.)		
Max. tool diameter (mm)		75		
<w/o adjacent tool (mm)		125	75	
Max. tool length (mm)		280	200	
Max. tool weight (kg)		7	4.5	
CTC time – ISO 10791-9 (sec.)		9	8	

Note: *S6-25%

(F): FANUC 31iA

(T): HEIDENHAIN iTNC530

Technical Data	MD1200		
	/15C	/15M	/25M
Coolant system			
Coolant tank capacity (Liter)	400		
Pump capacity			
- Nozzle coolant	60 L / min., 4 bar		
- Through spindle coolant	25 L / min., 20 bar		
- Wash down	40 L / min., 4 bar		
Machine size			
Height (mm)	3,030		
Floor space W x D (mm)	3,950 x 4,040		
Weight (kg)	13,000		
Connections			
Main power	220 V / 60 Hz or 400 V / 50 Hz		
Power consumption (KVA)	35 (F / T)	55 (T)	65 (T)

●=Standard ○=Option ✕=N/A

Standard / Option Accessories :	MD1200		
	/15C	/15M	/25M
■ HEIDENHAIN iTNC530	●	●	●
■ HEIDENHAIN iTNC530 Option2	○	○	○
■ FANUC 31iA	○	✕	✕
■ Spindle oil chiller	●	●	●
■ Tooling - ISO 40	○	○	✕
- BT 40	●	●	✕
- DIN	○	○	✕
- HSK A63	○	✕	●
■ 40 Taper / 30 position tool magazine	●	●	●
■ 40 Taper / 48 & 60 position tool magazine	○	○	○
■ Pull stud for BT tooling system	○	○	○
■ Linear encoder absolute 0.05 μm	○	○	○
■ Coolant system	●	●	●
■ 20 bar through spindle coolant	○	○	○
■ 50 bar through spindle coolant	○	○	○
■ Coolant wash gun	●	●	●
■ Coolant wash down	●	●	●
■ Chip conveyor	○	○	○
	Scrape type	○	○
	Hinge type	○	○
■ Chip augers	●	●	●
■ Probe	○	○	○
■ Cutter air blast	●	●	●
■ Laser tool measuring system	○	○	○
■ Mist collector	○	○	○
■ Work light	●	●	●
■ Machine status light	●	●	●
■ CE & EMC	●	●	●

QUASER MD1200 SERIES



Installation dimension

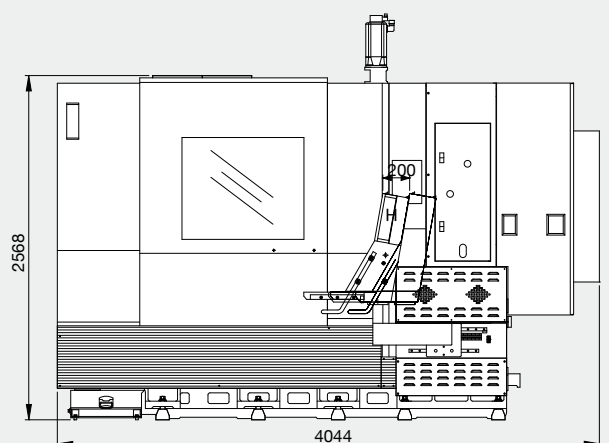
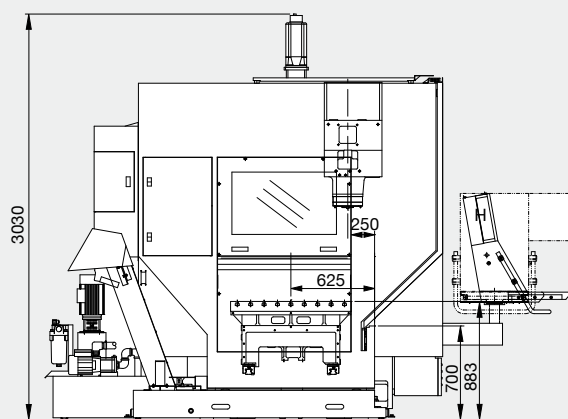
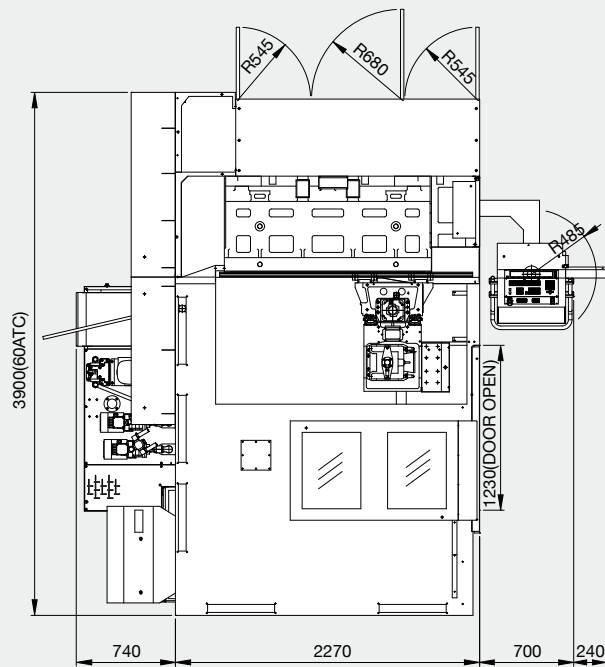
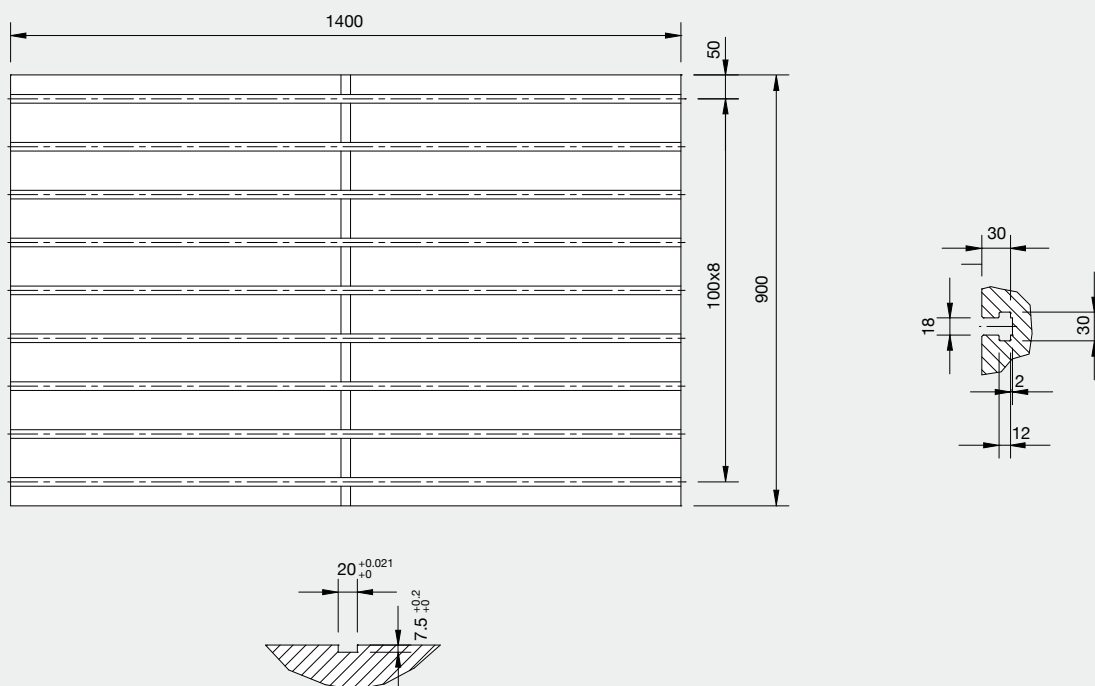


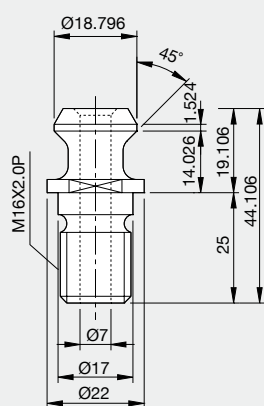


Table dimension

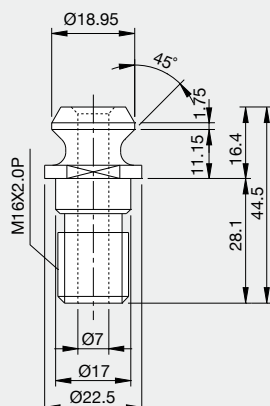


Pull stud and applicable tools

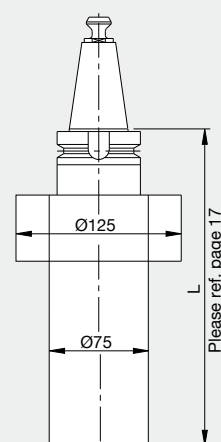
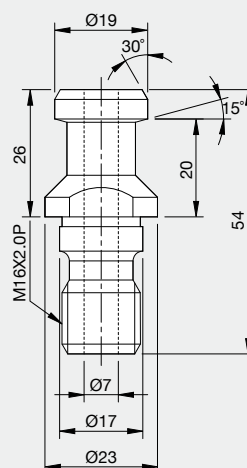
BT 40 (QUASER SUPPLY)



ISO (7388-8)



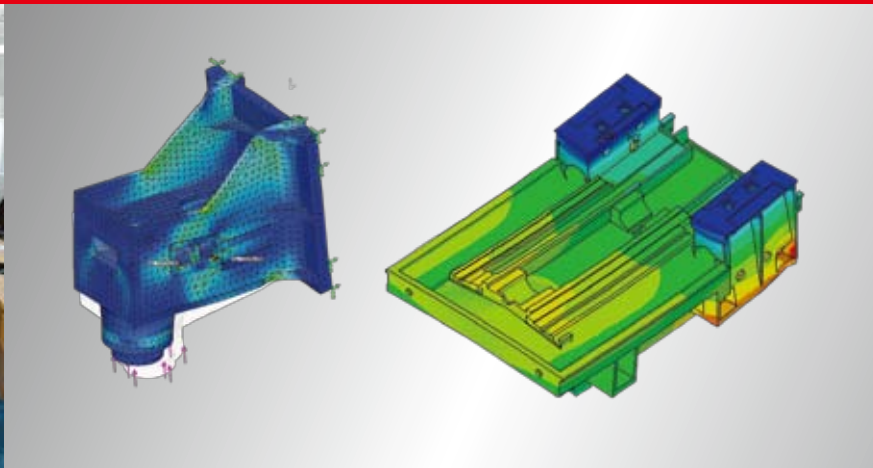
DIN (69872-A)



We build machines in a hybrid way

- Very classic craftsmanship combined with most advanced modern equipments in a clean environment...







www.quaser.com

Fold here for filing!

08120205 MacHS TEL 04-2473326