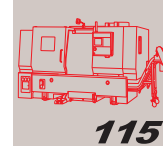
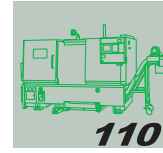
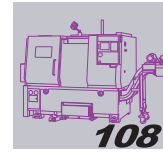
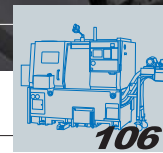
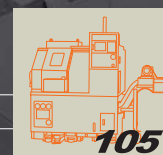


NEX SERIES

CNC LATHE



TAKISAWA[®]
T A I W A N

TAIWAN TAKISAWA TECHNOLOGY CO., LTD.
No.505, Sec-3 Yeng-ping Road, Ping Chen City, Taoyuan Hsien, Taiwan.
TEL:886-3-4643166 ▲ FAX:886-3-4643674
E-mail:bryan@takisawa.com.tw ▲ Web site: www.takisawa.com.tw

TAKISAWA[®]
T A I W A N

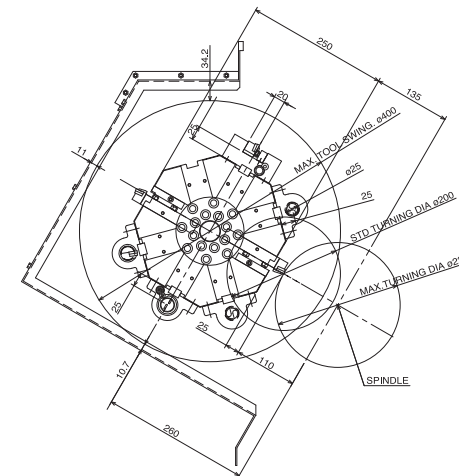
NEX-105 CNC LATHE

FEATURES

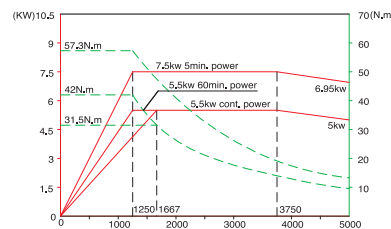
- ▶ Maxima Spindle Speed Can Reach 6000 RPM.
- ▶ Servo Motor Turret Has High Speed And High Accuracy.
- ▶ Rigid And Durable Linear Guide For X-Axis And Z-Axis.
- ▶ Fast Indexing To Reduce Non-Cutting Time And Increase Productivity.



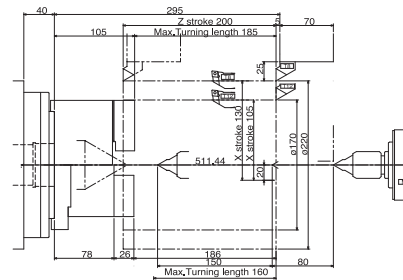
NEX-105 T8 Tool Interface



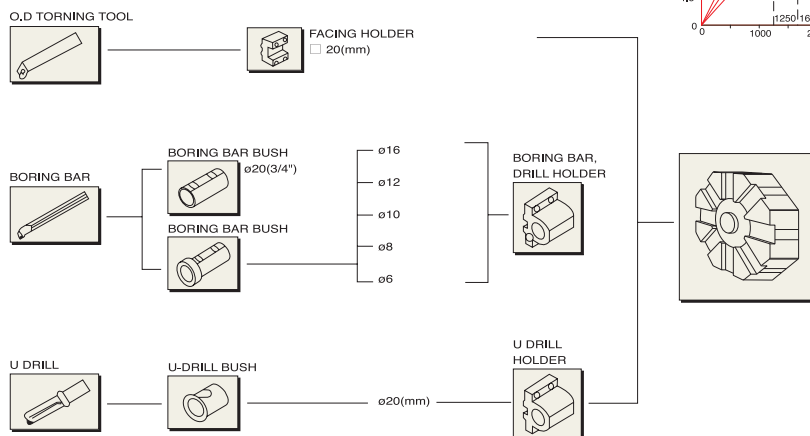
NEX-105 Spindle Output Diagram



NEX-105 Working Range



NEX-105 Tool System



NEX-105 CNC FUNCTION

- ▶ Tool offset pairs 64-pairs
- ▶ Part program storage length 320m
- ▶ Registered programs 400
- ▶ Inch / metric conversion
- ▶ Thread cutting
- ▶ Linear acceleration / deceleration
- ▶ Machining status
- ▶ Chamfering / corner
- ▶ Programmable data
- ▶ Custom macro B
- ▶ Multiple repetitive cycles
- ▶ Canned cycle for drilling
- ▶ Constant surface speed control
- ▶ Spindle speed fluctuation detection
- ▶ Rigid tapping
- ▶ Tool nose radius compensation
- ▶ Tool geometry / wear compensation
- ▶ Extended part program editing
- ▶ Background editing
- ▶ Run hour and parts count display
- ▶ Graphic display

NEX-106 CNC LATHE

FEATURES

- ▶ Perfect And Balanced integration For Controller, Servo Motors And Mechanics.
- ▶ The Best Solution For Small Batch Production Of Complex Parts.
- ▶ Safety Advanced Features Reduce Time Dramatically, That Is Due To Operator's Errors.



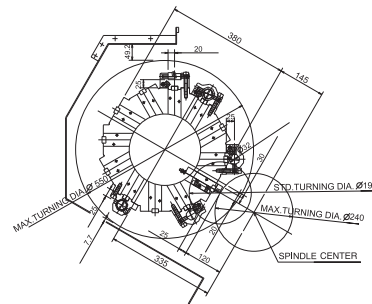
NEX-106 CNC FUNCTION

- | | | | |
|---|---|---|---|
| <ul style="list-style-type: none"> ▶ Tool offset pairs 64-pairs ▶ Part program storage length 320m ▶ Registered programs 400 ▶ Inch / metric conversion ▶ Disturbance torque detection function (for loader) ▶ Thread cutting | <ul style="list-style-type: none"> ▶ Linear acceleration / deceleration ▶ Machining status ▶ Chamfering / corner ▶ Programmable data ▶ Custom macro B ▶ Multiple repetitive cycles ▶ Canned cycle for drilling | <ul style="list-style-type: none"> ▶ Constant surface speed control ▶ Spindle speed fluctuation detection ▶ Rigid tapping ▶ Tool nose radius compensation ▶ Tool geometry / wear compensation ▶ Extended part program editing ▶ Background editing | <ul style="list-style-type: none"> ▶ Run hour and parts count display ▶ Graphic display ▶ Dynamic graphic display (for super CAPIT) ▶ Stored pitch error compensation ▶ Continuous thread cutting ▶ Variable lead thread cutting ▶ Workpiece coordinate system |
|---|---|---|---|

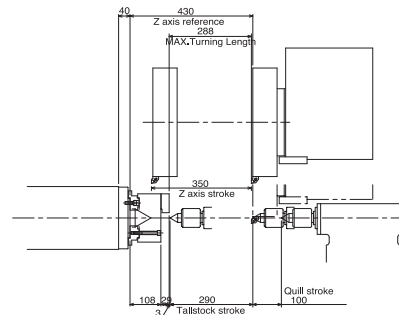


0° ~ 60°

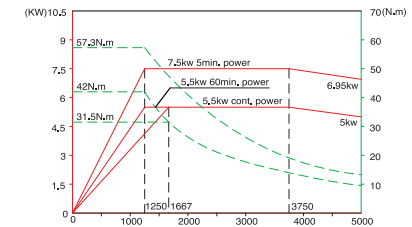
NEX-106 T12 Tool Interface



NEX-106 Working Range



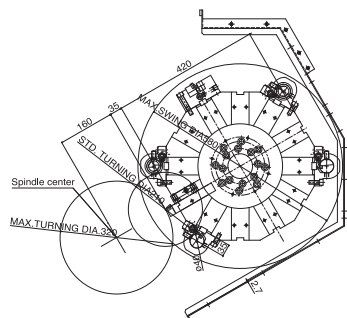
NEX-106 Spindle Output Diagram



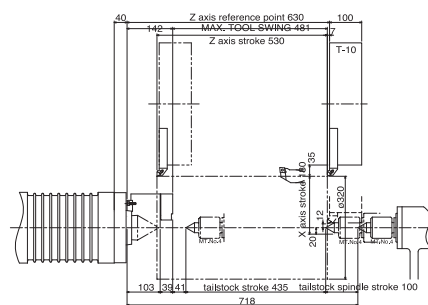
NEX-108 CNC LATHE



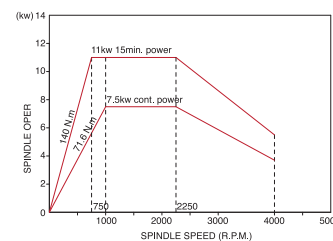
NEX-108 T12 Tool Interface



NEX-108 Working Range



NEX-108 Spindle Output Diagram



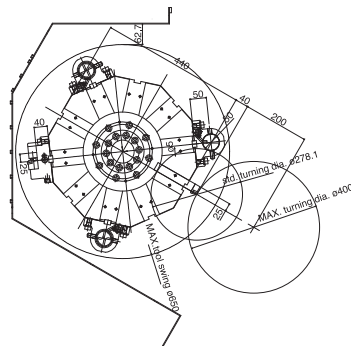
NEX-108 CNC FUNCTION

- » Tool offset pairs 64-pairs
- » Part program storage length 320m
- » Registered programs 400
- » Inch / metric conversion
- » Disturbance torque detection function (for loader)
- » Thread cutting
- » Linear acceleration / deceleration
- » Machining status
- » Chamfering / corner
- » Programmable data
- » Custom macro B
- » Multiple repetitive cycles
- » Canned cycle for drilling
- » Constant surface speed control
- » Spindle speed fluctuation detection
- » Rigid tapping
- » Tool nose radius compensation
- » Tool geometry / wear compensation
- » Extended part program editing
- » Background editing
- » Run hour and parts count display
- » Graphic display
- » Dynamic graphic display (for super CAPIT)
- » Stored pitch error compensation
- » Continuous thread cutting
- » Variable lead thread cutting
- » Workpiece coordinate system

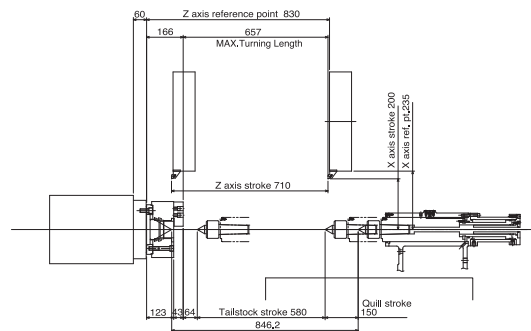
NEX-110 CNC LATHE



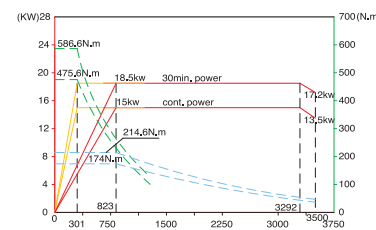
NEX-110 T10 Tool Interface



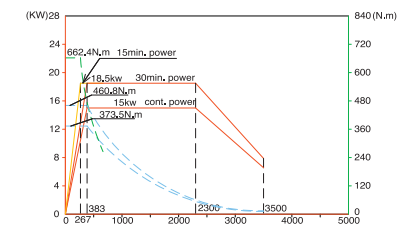
NEX-110 Working Range



NEX-110 Spindle Output Diagram



NEX-110 P Motor Spindle Output Diagram (Option)



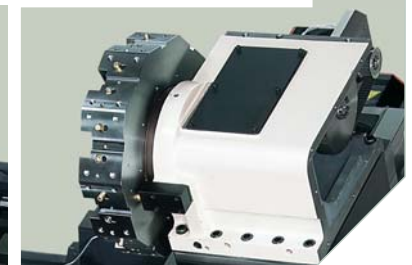
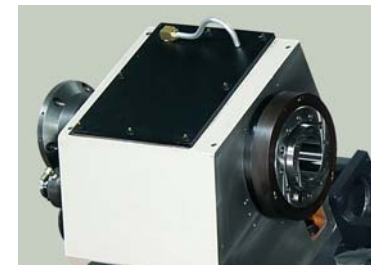
NEX-110 CNC FUNCTION

- » Tool offset pairs 64-pairs
- » Part program storage length 320m
- » Registered programs 400
- » Inch / metric conversion
- » Disturbance torque detection function (for loader)
- » Thread cutting
- » Linear acceleration / deceleration

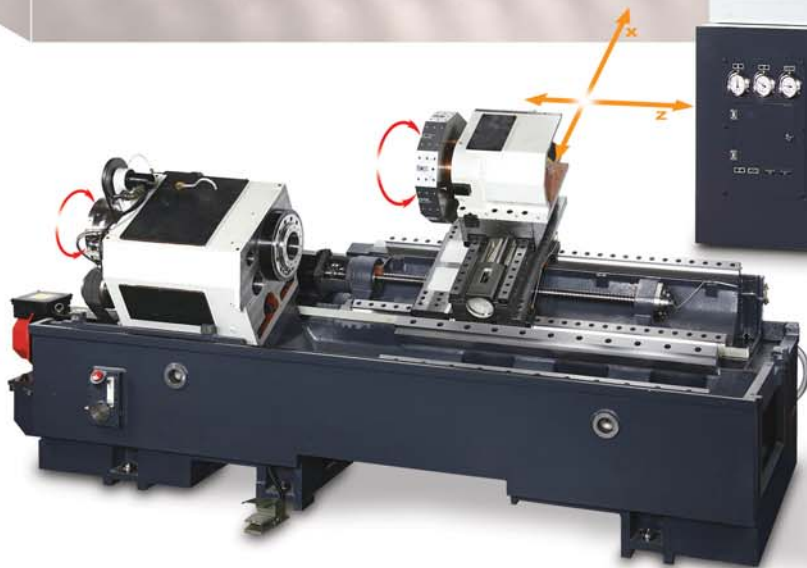
- » Machining status
- » Chamfering / corner
- » Programmable data
- » Custom macro B
- » Multiple repetitive cycles
- » Canned cycle for drilling
- » Constant surface speed control
- » Spindle speed fluctuation detection

- » Rigid tapping
- » Tool nose radius compensation
- » Tool geometry / wear compensation
- » Extended part program editing
- » Background editing
- » Run hour and parts count display
- » Graphic display

- » Dynamic graphic display (for super CAPIT)
- » Stored pitch error compensation
- » Continuous thread cutting
- » Variable lead thread cutting
- » Workpiece coordinate system



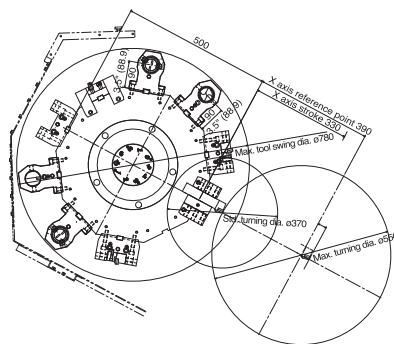
NEX-115 CNC LATHE



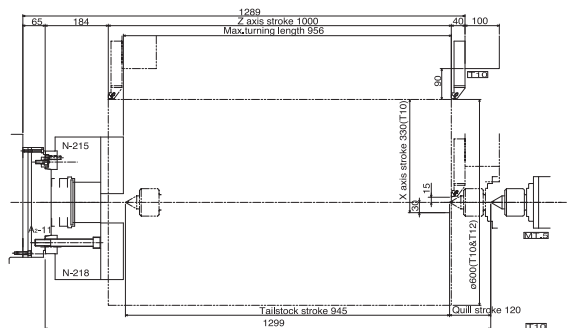
NEX-115 CNC FUNCTION

- » Tool offset pairs 64-pairs
- » Part program storage length 320m
- » Registered programs 400
- » Inch / metric conversion
- » Disturbance torque detection function (for loader)
- » Thread cutting
- » Linear acceleration / deceleration
- » Machining status
- » Chamfering / corner
- » Programmable data
- » Custom macro B
- » Multiple repetitive cycles
- » Canned cycle for drilling
- » Constant surface speed control
- » Spindle speed fluctuation detection
- » Extended part program editing
- » Background editing
- » Run hour and parts count display
- » Graphic display
- » Rigid tapping
- » Tool nose radius compensation
- » Tool geometry / wear compensation
- » Dynamic graphic display (for super CAPIT)
- » Stored pitch error compensation
- » Continuous thread cutting
- » Variable lead thread cutting
- » Workpiece coordinate system

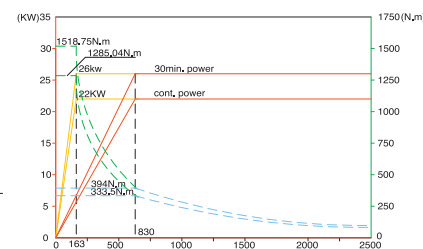
NEX-115 T10 Tool Interface

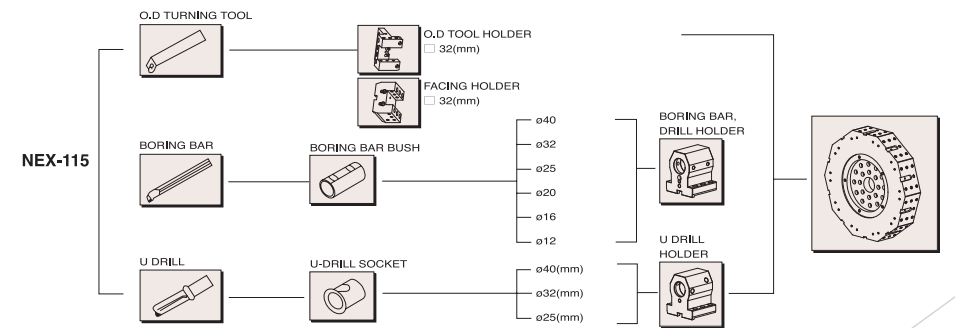
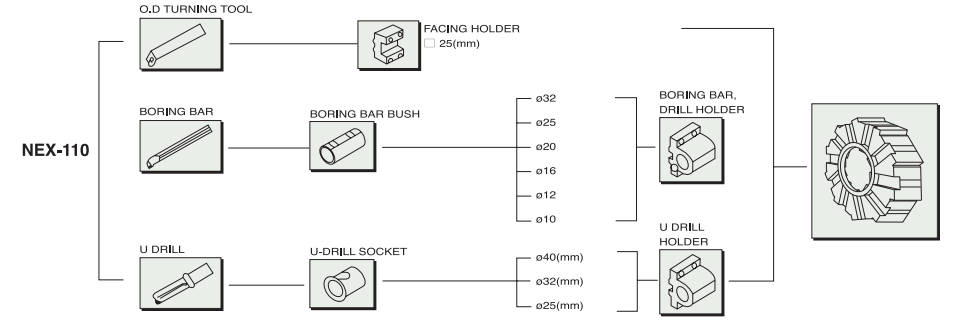
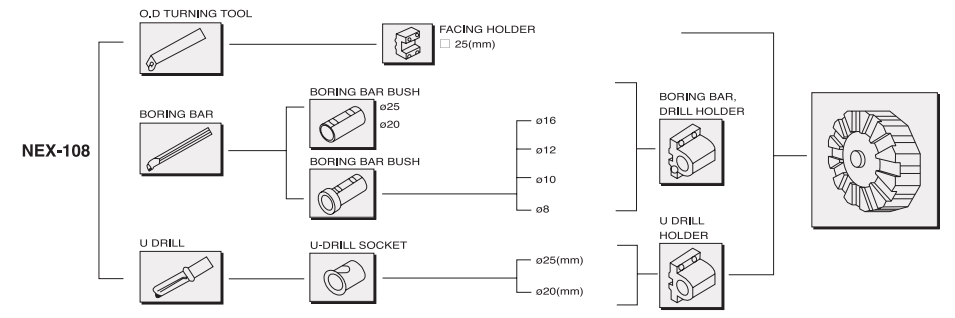
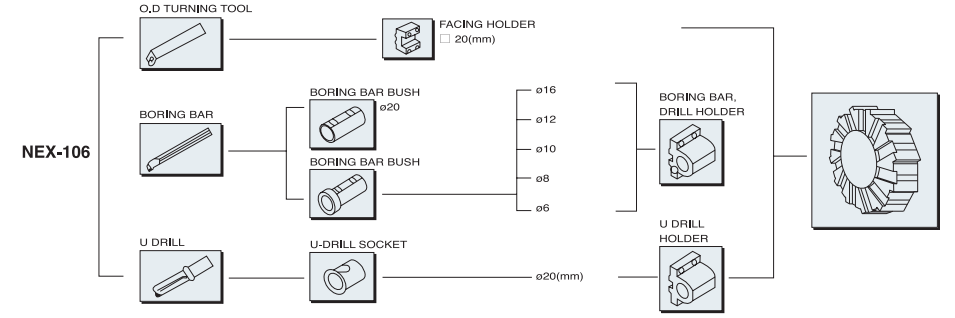
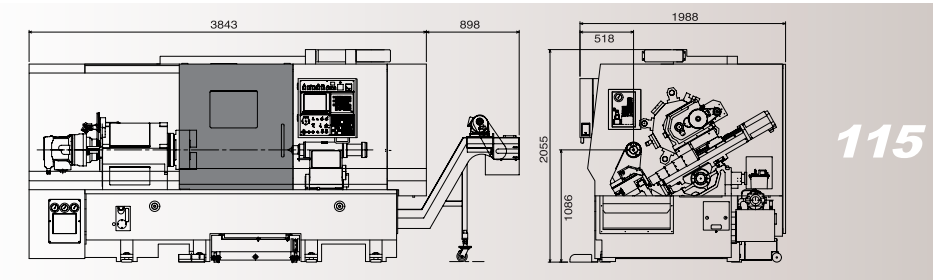
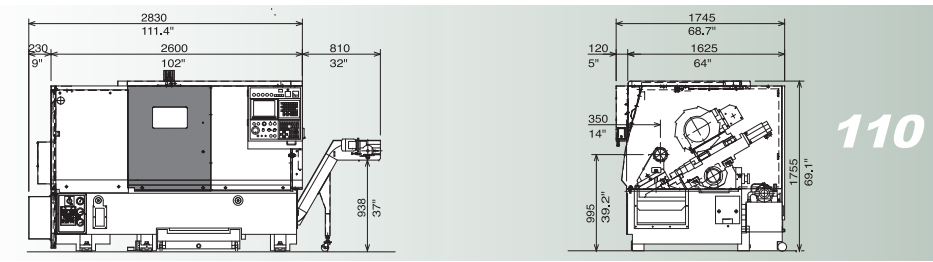


NEX-115 Working Range



NEX-115 Spindle Output Diagram





Items			NEX-105	NEX-106	NEX-108	NEX-110	NEX-115
CAPACITY	Swing over bed	mm	400	350	400	495	600
	Swing on cross slide	mm	280	280	320	400	600
	Max.Swing (on front door)	mm	400	445	480	560	720
	Standard turning dia	mm	200	190	210	287	370
	Max. turning dia	mm	220	240	320	400	600
	Max. turning length	mm	185	288	481	657	956
	Bar capacity	mm	42	43	52	75	105
TRAVEL	X-axis Stroke	mm	130(T8)	140	180	220	330
	Z-axis Stroke	mm	200	350	530	710	1000
SPINDLE	Spindle speed	rpm	6000	5000	4000	3500	2500
	Chuck size		6"	6"	8"	10" & 12"	15" & 18"
	Spindle nose		FLAT140	FLAT140	A2-6	A2-8	A2-11
	Spindle thru-hole dia	mm	53	56	63	86	117
	Spindle bearing dia	mm	80	80	100	120	160
	Spindle No.		1	1	1	1	1
TURRET	Turret No.		1	1	1	1	1
	Type of turret		T8	T12	T12	T10	T10
	Height of square tool	mm	20	20	25	25	32
	Dia of boring bar hole	mm	25	32	40	50	50
TAILSTOCK	Stroke of tailstock	mm	150	290	435	580	--
	Tailstock's shaft hole dia	mm	55	75	75	110	110
	Taper of tailstock		MT.3	MT.4	MT.4	MT.5	MT#5
FEED	Stroke of tailstock's shaft	mm	80	100	100	150	120
	Rapid travel X-axis	m/min	20	24	20	18	20
MOTOR	Rapid travel Z-axis	m/min	20	30	24	22	24
	Spindle motor	Kw	5.5 / 7.5	5.5 / 7.5	7.5 / 11	15 / 18.5	22 / 26
	Servo motor X-axis	Kw	1.2	1.2	1.2	1.2	4
POWER	Servo motor Z-axis	Kw	1.2	2.5	2.5	2.5	4
	Electric	KVA	13.7	19	21	35	49
TANK	Hydraulic	L(Kw)	20	40(1.5)	40(1.5)	40(1.5)	40(1.5)
	Coolant tank	L(Kw)	90	160(0.4)	200(0.4)	220(0.4)	230(0.4)
	Lubrication	L(Kw)	2	2(0.004)	2(0.004)	2(0.004)	2(0.004)
SIZE	Height	mm	1710	1720	1815	1755	2100
	Length x Width	mmxmm	1440x1327	1950x1530	2190x1690	2830x1745	3843x1988
	Weight of machine	kg	2500	3500	3800	4850	7100

Items	NEX-105	NEX-106	NEX-108	NEX-110	NEX-115
Fanuc spindle motor	★	★	★		
Two-steps gear box spindle				★	★
Hydraulic servo turret	★	★	★	★	★
Boring bar tool holder x4PC	★	★	★	★	★
U-drill tool holder x2PC	★	★	★	★	★
End face tool holder x1PC	★	★	★	★	★
O.D tool holder x4PC					★
Boring bar bush 6ø	★	★			
Boring bar bush 8ø	★	★	★		
Boring bar bush 10ø	★	★	★	★	
Boring bar bush 12ø	★	★	★	★	★
Boring bar bush 16ø	★	★	★	★	★
Boring bar bush 20ø	★	★	★	★	★
Boring bar bush 25ø			★	★	★
Boring bar bush 32ø				★	★
Boring bar bush 40ø					★
U-drill bush 20ø	★	★	★		
U-drill bush 25ø			★	★	★
U-drill bush 32ø				★	★
U-drill bush 40ø				★	★
Working lamp	★	★	★	★	★
Tool box	★	★	★	★	★
Operation manual	★	★	★	★	★
Progranimable hydraulic tailscock quill	★	★	★	★	★
Hydraulic chuck	★	★	★	★	★
Foot switch	★	★	★	★	★
Chip conveyor & chip cart	▲	▲	▲	▲	▲
Parts catcher	▲	▲	▲	▲	
Parts conveyor	▲	▲	▲	▲	
Bar feeder & interface	▲	▲	▲	▲	
Parts counter	▲	▲	▲	▲	▲
Air blow	▲	▲	▲	▲	▲
Automatic front door	▲	▲	▲	▲	▲
Tool setter	▲	▲	▲	▲	▲
Collet chuck	▲	▲	▲	▲	
Programmable tailstock	▲	▲	▲	▲	▲